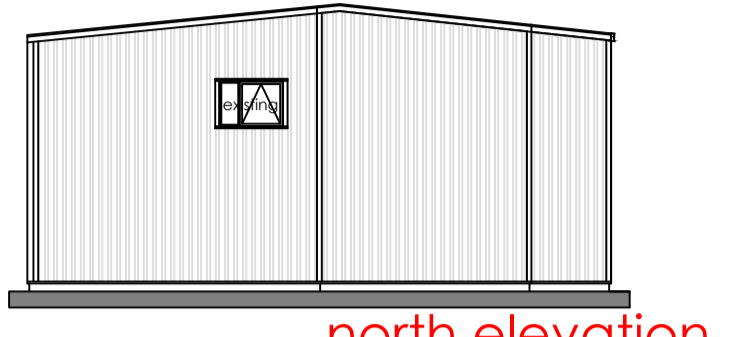
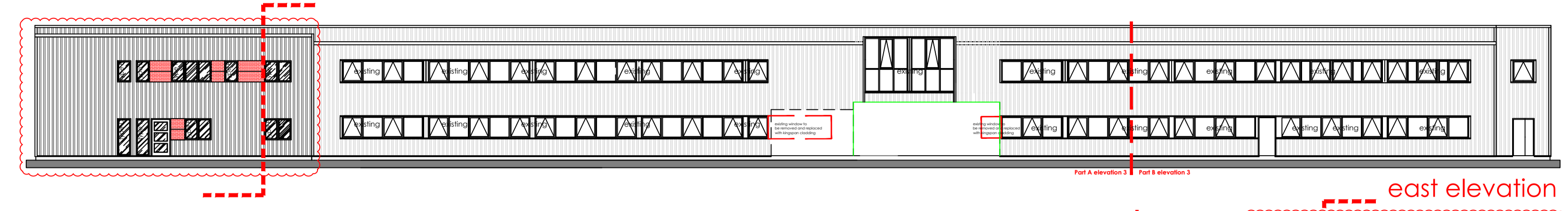


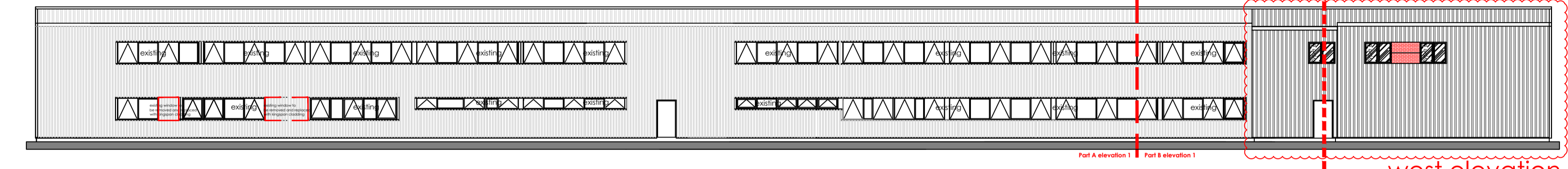
south elevation



north elevation



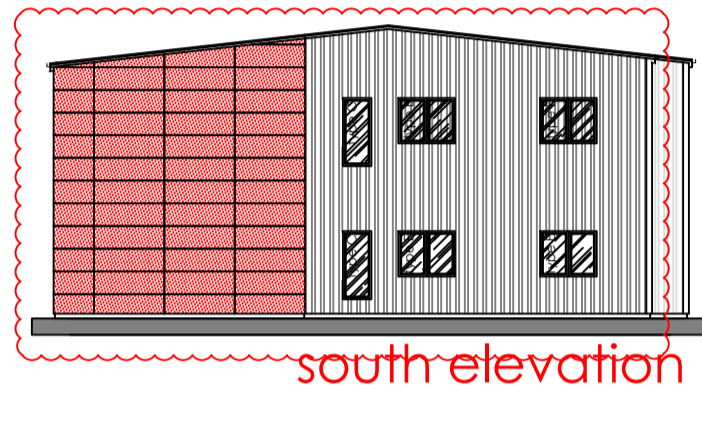
east elevation



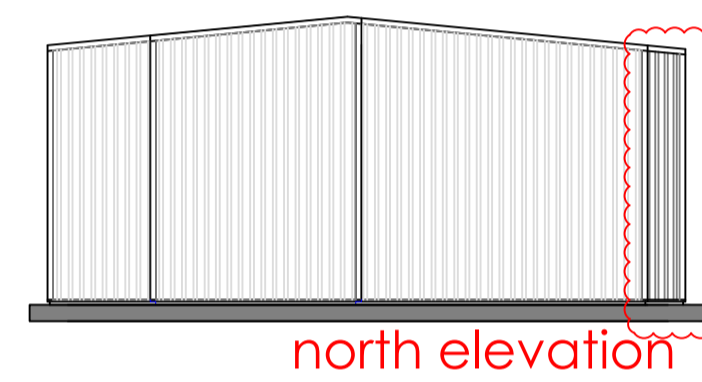
west elevation

Upper

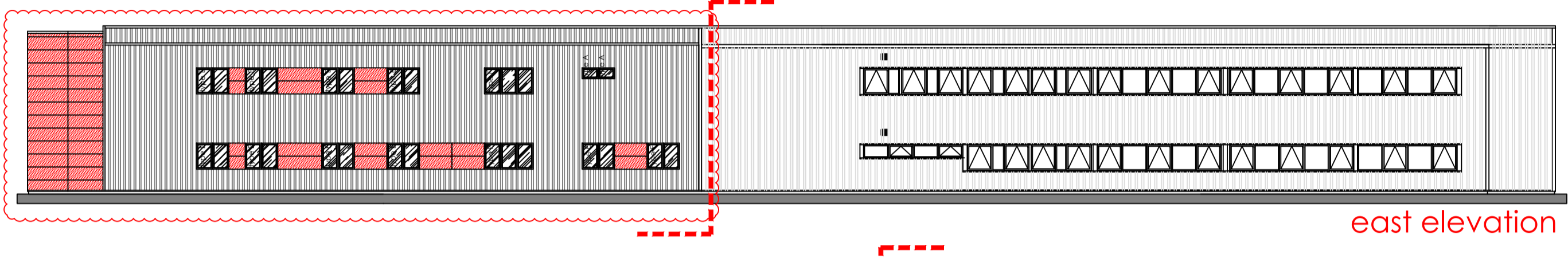
- Trespa Clad
- Walls - Kingspan insulated cladding system KS1000FC
- Roof - Kingspan insulated roof sheet system KS1000LP



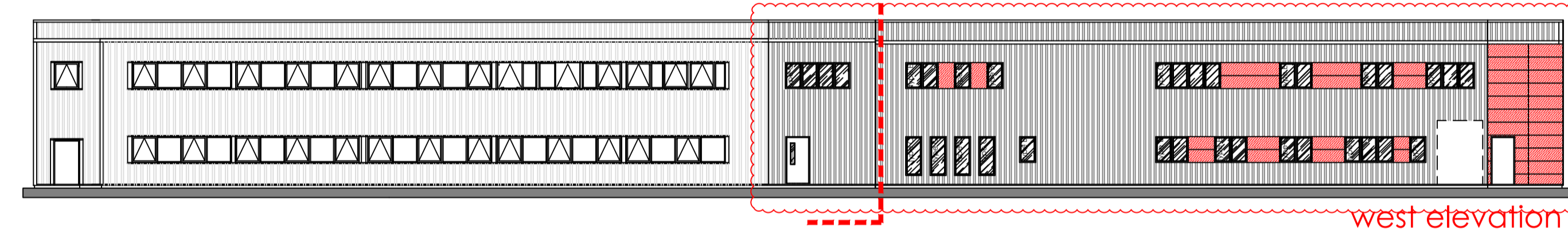
south elevation



north elevation

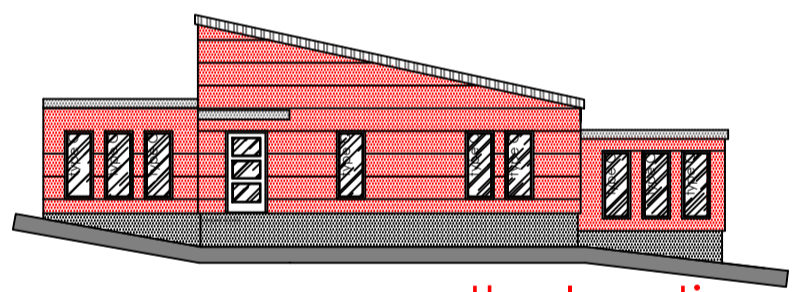


east elevation

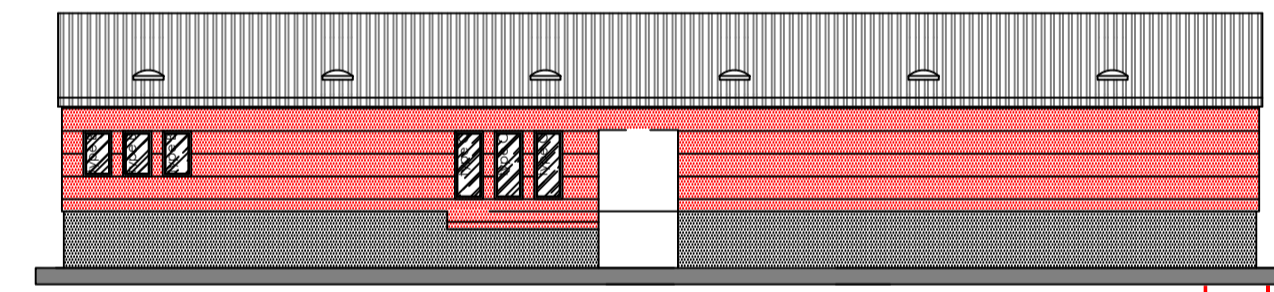


west elevation

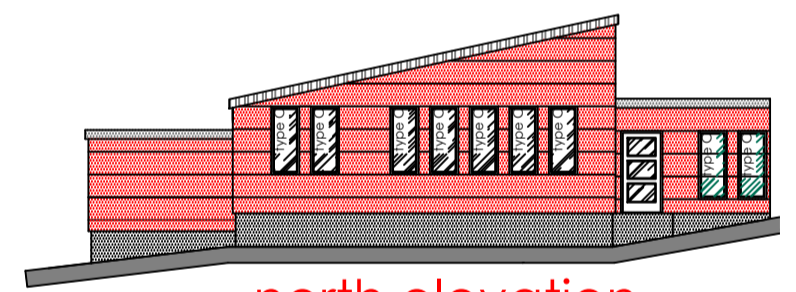
Lower



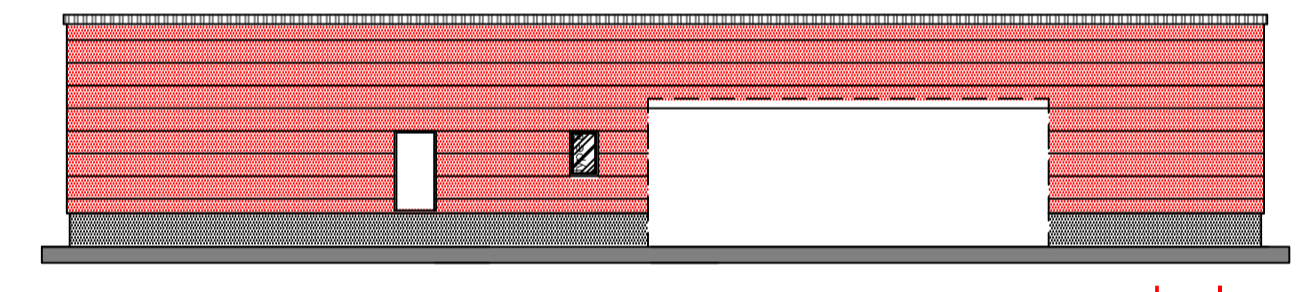
south elevation



east elevation



north elevation



west elevation

Middle

Upper Building 1 extension

- External Walls**
- 101.5** 100mm goosewing grey BS10A05 Kingspan insulated cladding sheet KS1000FC V1 on Ayrshire Z17017 sheeting rails.
- 101.6** areas indicated on elevations to have trespa cladding, to be:
- 10mm trespa meteon carmine red A12.3.7/ST cladding on 38x50mm battens on 25x50mm counter battens @ctrs as per Trespa International B.V. agreement certificate 99/3629 on DPC fixed to contractor fabricated insulation panel.
- 101.7** contractor fabricated insulation panel to be 200x50mm timber studs with 9mm ply to each side. Insulation between studs to be Knaff 200mm fixed to Ayrshire CW17018 sheeting rails.
- 101.8** corner flashings to be goosewing grey BS10A05 - to match cladding.
- Roof**
- 101.9** 110mm goosewing grey BS10A05 Kingspan insulated roof sheets KS1000LP on Ayrshire Z17017 Purlins.
- 101.10** flashings to match existing - solent blue BS18E53.
- 101.11** aluminium gutturing - profile and colour to match existing- solent blue BS18E53.
- Windows & Doors**
- 101.12** windows to be Nordan or equivalent redwood window - factory painted with 3 coats Vaalti opaque RAL7043
- 101.13** doors to be nordan external doorset gallery range 819G.
- 101.14** window flashings colour to match cladding - goosewing grey BS10A05.
- 101.15** windows and doors to be fixed to Ayrshire CW17018 sheeting rails.

Middle Building Extension

- External Walls**
- 102.5** 10mm trespa meteon carmine red A12.3.7/ST cladding on 38x50mm battens on 25x50mm counter battens@ctrs as per Trespa International BV agreement certificate 99/ 3692 on DPC fixed to contractor fabricated insulation panel
- 102.6** contractor fabricated insulation panel to be 200x50mm timber studs with 9mm ply to each side. Insulation between studs to be Knaff 200mm.
- Roof**
- 102.7** 110mm goosewing grey BS10A05 Kingspan insulated roof sheets KS1000LPon Ayrshire Z107017 purlins.
- 102.8** flashings to be goosewing grey BS10A05.
- 102.9** aluminium gutturing to be goosewing grey BS10A05.
- Windows & Doors**
- 102.10** windows to be Nordan or equivalent redwood window - factory painted with 3 coats Vaalti opaque RAL7043
- 102.11** doors to be nordan external doorset gallery range 819G
- 102.12** window flashings colour to match cladding - goosewing grey BS10A05
- Links**
- External Walls**
- 102.13** 10mm trespa meteon carmine red A12.3.7/ST cladding on 38x50mm battens on 25x50mm counter battens @ctrs as per Trespa International B.V. agreement certificate 99/3629 on DPC fixed to 9mm ply on 200x50mm timber stud kit @600mm ctrs with 200mm Knaff insulation between studs on 37.5mm kingspan insulated plasterboard.
- Roof**
- 102.14** samafil mechanically fastened roof covering on 100mm Kingspan thermal insulation board on 18mm ply on 200x50mm timber rafters@600ctrs with 200mm Knaff insulation between rafters on 9mm ply.
- 102.15** flashings to be proprietary metal profiles - colour to match windows.
- Lift shaft**
- 102.16** 10mm trespa meteon carmine red A12.3.7/ST cladding on trespa metal fixing system with 110mm Kingspan TW55 insulation between fixings on 215x100mm blockwork laid on flat.

Phase 2 extension

- External Walls**
- 103.5** 100mm goosewing grey BS10A05 Kingspan insulated cladding sheet KS1000FC V1 on Ayrshire Z17017 purlins.
- 103.6** areas indicated on elevations to have trespa cladding, to be:
- 10mm trespa meteon carmine red A12.3.7/ST cladding on 38x50mm battens on 25x50mm counter battens @ctrs as per Trespa International B.V. agreement certificate 99/3629 on DPC fixed to contractor fabricated insulation panel on engineer specified cladding rails.
- 103.7** contractor fabricated insulation panel to be 200x50mm timber studs with 9mm ply to each side. Insulation between studs to be 200mm knaff insulation.
- 103.8** corner flashings to be goosewing grey BS10A05 - to match cladding.
- Roof**
- 103.9** 110mm goosewing grey BS10A05 Kingspan insulated roof sheets KS1000LP on Ayrshire Z17017 purlins.
- 103.10** flashings to match existing - solent blue BS18E53.
- 103.11** aluminium gutturing - profile and colour to match existing- solent blue BS18E53.
- Windows & Doors**
- 103.12** windows to be Nordan or equivalent redwood window - factory painted with 3 coats Vaalti opaque RAL7043
- 103.13** doors to be nordan external doorset gallery range 819G.10
- 103.14** window flashings colour to match cladding - goosewing grey BS10A05.
- 103.15** windows and doors to be fixed to Ayrshire CW17018 sheeting rails.
- Links**
- External Walls**
- 103.16** 10mm trespa meteon carmine red A12.3.7/ST cladding on 38x50mm battens on 25x50mm counter battens @ctrs as per Trespa International B.V. agreement certificate 99/3629 on DPC fixed to 9mm ply on 200x50mm timber stud kit @600mm ctrs with 200mm Knaff insulation between studs on 37.5mm kingspan insulated plasterboard.
- Roof**
- 103.17** samafil mechanically fastened roof covering on 100mm Kingspan thermal insulation board on 18mm ply on 200x50mm timber rafters@600ctrs with 200mm Knaff insulation between rafters on 9mm ply.
- 103.18** flashings to be proprietary metal profiles - colour to match windows.
- Lift shaft**
- 103.19** 10mm trespa meteon carmine red A12.3.7/ST cladding on Kingspan TW55 insulation on trespa metal fixing system with 110mm Kingspan TW55 insulation between fixings on 215x100mm blockwork laid on flat.

Construction Issue	C	January 2012
Added notes	B	January 2012
Revision construction extension area altered	No. A	Date may 2011

Shetland Islands Council
 Capital Programme Service
 Executive Services Department
 Greenhead Base, Lerwick, Shetland, ZE1 0PY
 Telephone: 744140 (STD Code 01595)
 Fax: 744136

Shetland College

Construction Issue

Proposed elevations project board info

Job Code UCL5203	Draw No. UCL5203-B104	Rev. C	Drawn LAD
Scale 1:200@A1	Date 20 Jan 2011	AutoCAD File 104	

A1