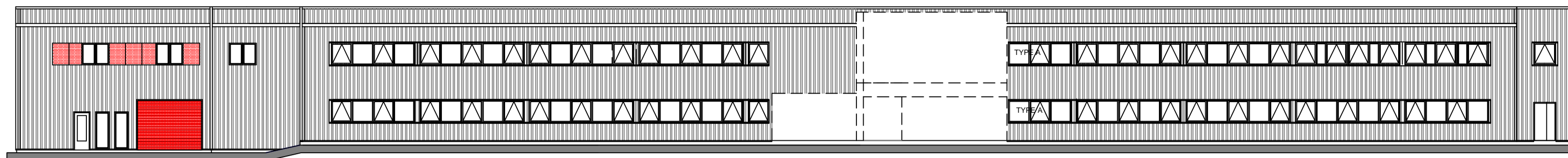
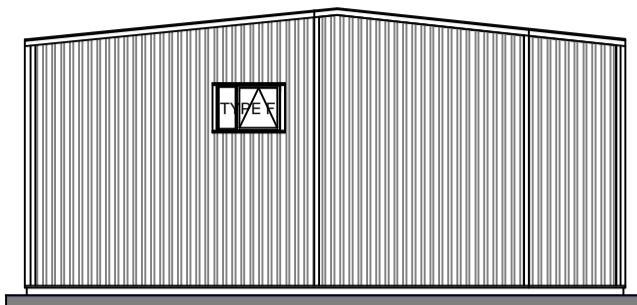


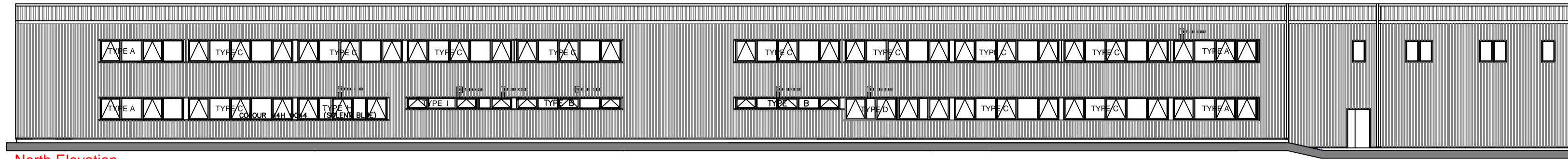
West Elevation



South Elevation



East Elevation



North Elevation

4.1 Phase 1 Building
scale 1:200

Phase 1&2 extensions

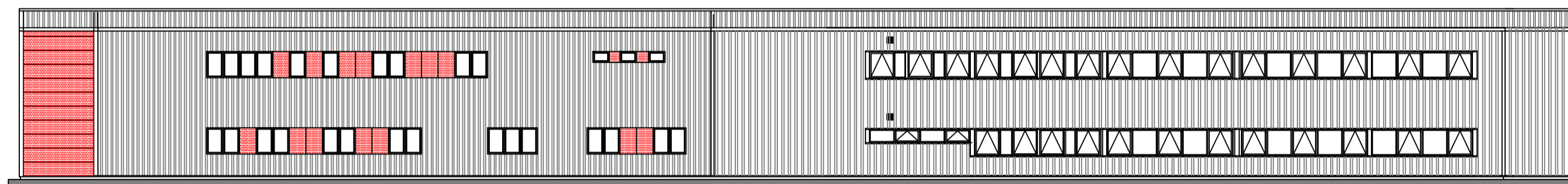
- Extensions to be of steel frame construction to tie in with the existing structure.
- Existing cladding - "goosewing grey" aluminium profile sheeting. Colour to be continued on extensions but profile to be less industrial with a smaller profile.
- Areas shown in red to be clad in red eternit boarding.
- Roofing to match existing "goosewing grey" aluminium cladding.
- Existing flashings - "solent blue" aluminium. Colour to **not** be continued - colour to match aluminium cladding.
- Windows to be timber aluminium clad - dark grey.
- Doors to be timber - dark grey.

Phase 3 building

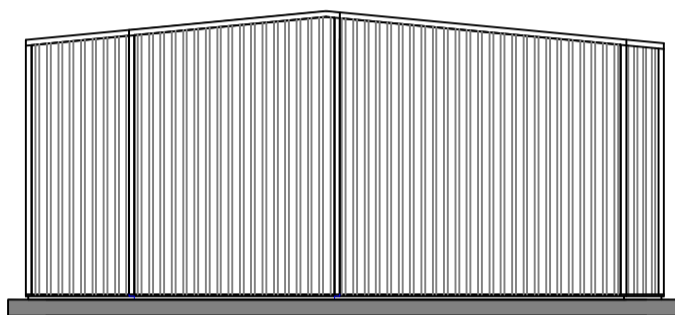
- Building to be of steel frame construction.
- Cladding to be red eternit boards.
- Roofing to match existing "goosewing grey" aluminium cladding.
- Roof vents to be grey colour - to be confirmed with planning.
- Sun tubes to run along roof.
- Windows to be timber aluminium clad - dark grey.
- Doors to be timber - dark grey.



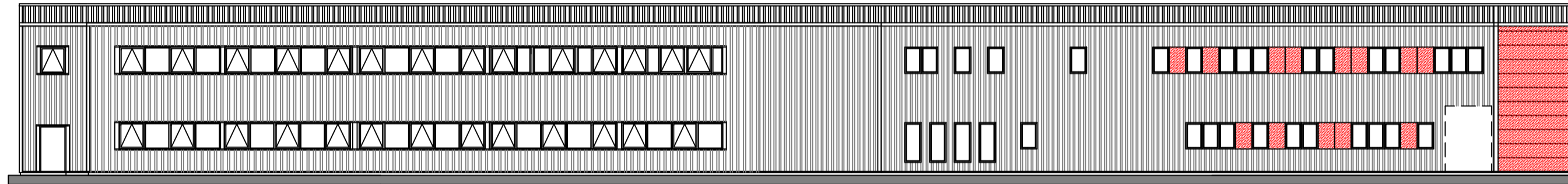
West Elevation



South Elevation

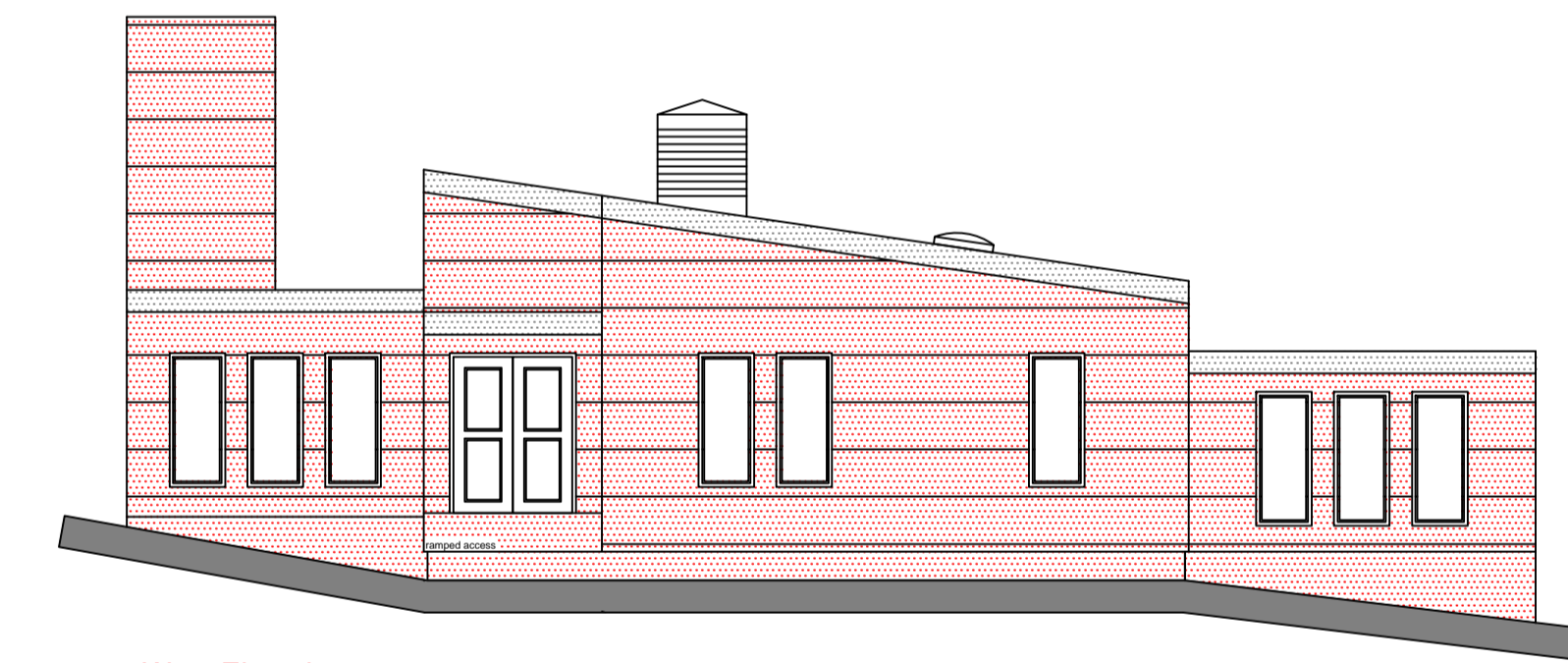


East Elevation

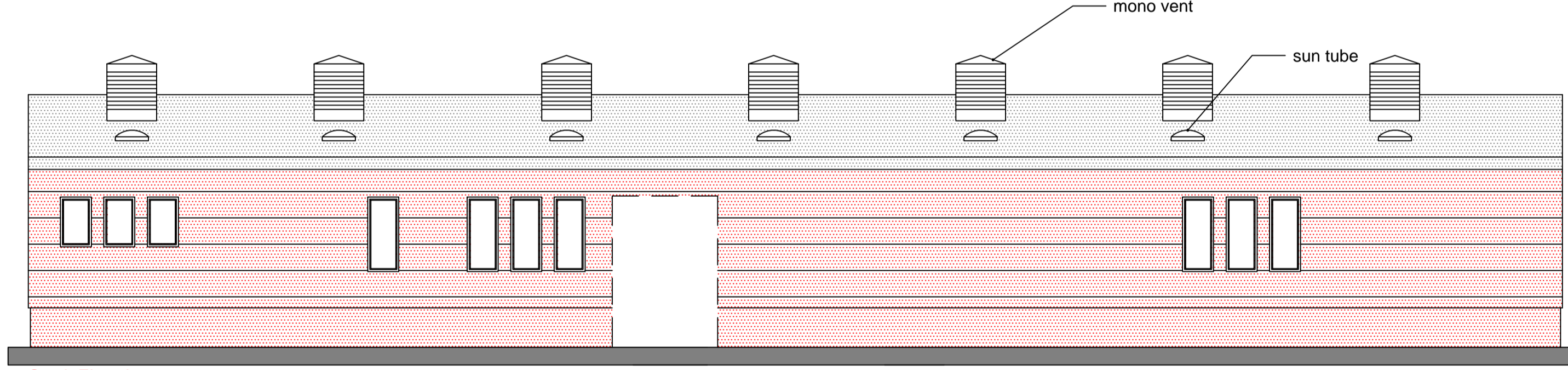


North Elevation

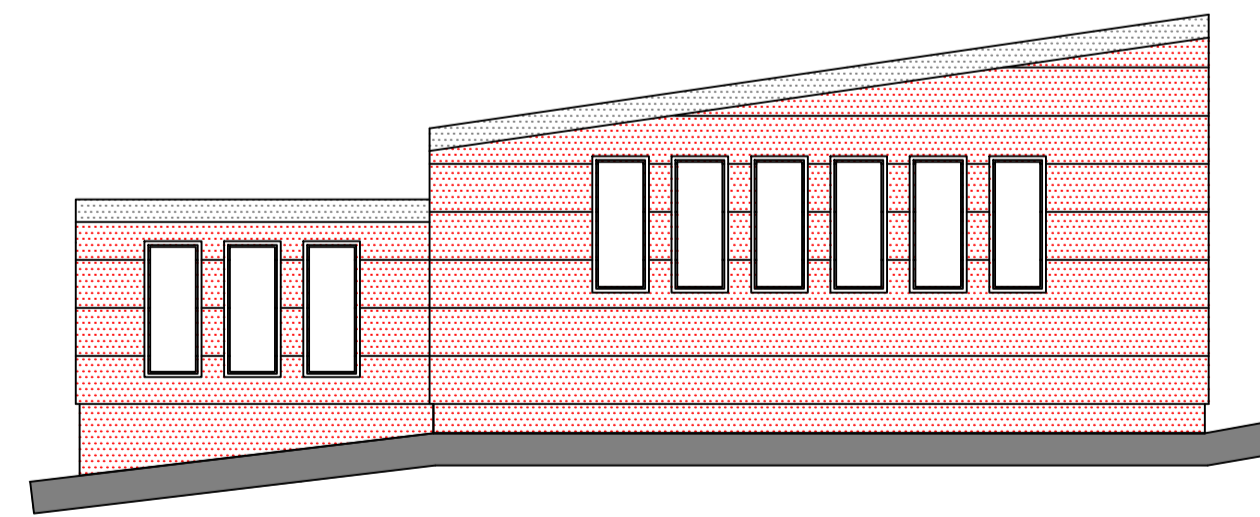
4.2 Phase 2 Building
scale 1:200



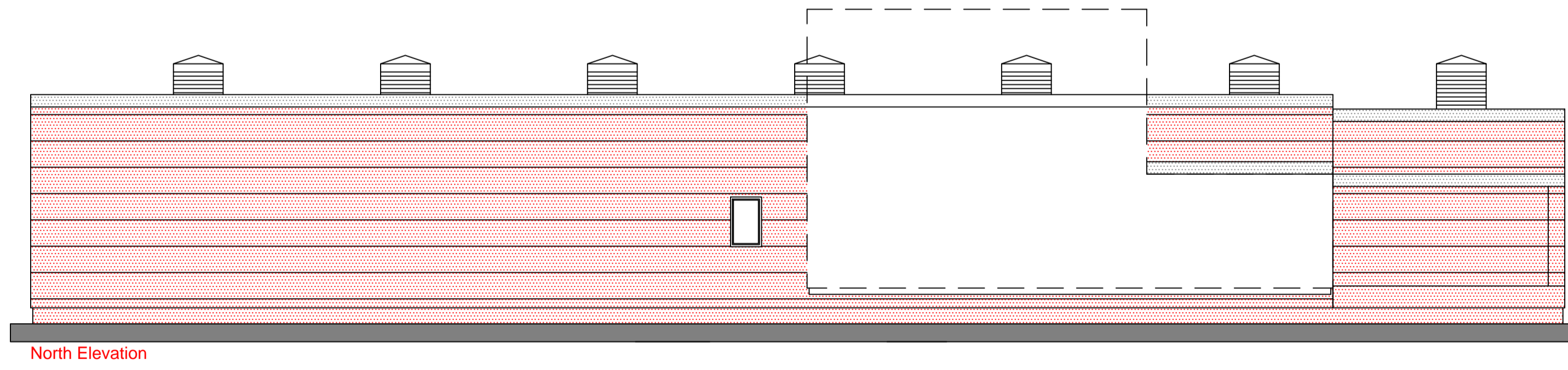
West Elevation



South Elevation




East Elevation



North Elevation

4.3 Phase 3 Building
scale 1:100

Revision		No.	Date
 Shetland College Phase 3		Shetland Islands Council Capital Programme Service Executive Services Department Greenhead Base, Lerwick, Shetland, ZE1 0PY Telephone: 744140 (STD Code 01595) Fax: 744136	
Elevations As Proposed		Job Code UCL5203 Scale as shown@A1	Dwg.No. AA(0)04 Date October 2010 AutoCAD File elevations
		Rev. LAD	Drawn LAD